

natus
pediatrics



NeatNick™

Sweeping Action Heel Lancet

Great blood flow, reduces rejects, less painful.
Saves money too!



NeatNick 2.0™
Better Than Ever!

What People Are Saying About NeatNick:

- "Really liked the curve fit...did not feel need to press to prevent "jump." Loved it!"
- "Baby did not wake up – plenty of blood for lab."
- "Great Blood flow! Effortless – infant didn't cry."
- "Clean cut – no flap."
- "Our PKU recollection rate dropped significantly."
- "Less hemolysis – better samples for lab."

WRITTEN COMMENTS RECEIVED AT
CLINICAL TRIALS



NEATNICK 2.0 HAS ALL THE IMPROVEMENTS YOU'VE BEEN WAITING FOR – INCLUDING AN EASY-TO-REMOVE PULL RING AND EASY-TO-SEE ARROW!



Introducing NeatNick – The High-Speed, Lower-Cost Heel Lancet.

Looking for a less painful lancet that offers great blood flow and saves money? Meet NeatNick.

- Faster blade speed means less pain for babies.
- Smooth firing – does not "jump."
- Controlled depth comparable to other brands.
- Bright tropical colors make it easy to find.
- Reduces newborn screening reject rates and reduces hemolyzed samples. (Independent studies May 2009, on file.)

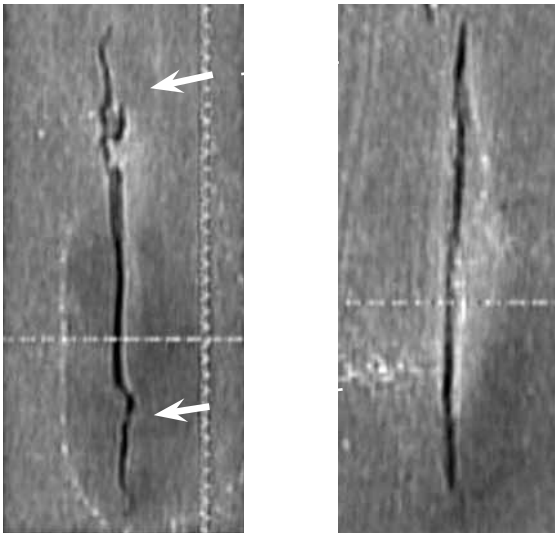


Makes a Neater Nick, reduces rejects and hemolyzed samples!

Hawaii Medical
NeatNick™



Engineered for Accuracy and Precision



JAGGED EDGED INCISIONS ARE MORE PAINFUL AND TAKE LONGER TO HEAL.

NEATNICK'S PRECISION, HIGH-SPEED BLADE CREATES A CLEAN-EDGED INCISION.

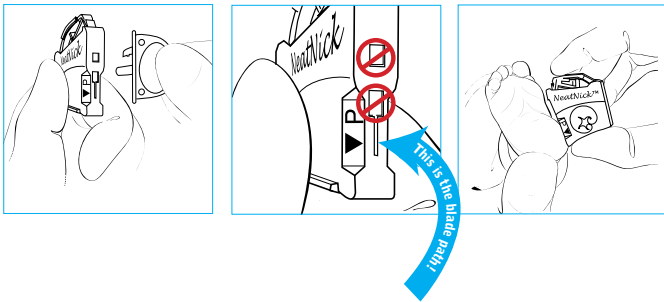
INCISION IS ENLARGED APPROXIMATELY 20 TIMES ACTUAL SIZE.

NeatNick's automated sweeping blade achieves a controlled depth of incision that is significantly safer than what medical literature has designated as acceptable depths of puncture for preterm and term infants.¹⁻³ Its controlled depth level is comparable to other automated heel lancets,⁴ yet it is designed to minimize infant pain through a high-speed nick and greater precision.

1. Blumenfeld, et al. 1979. Recommended site and depth of newborn heel skin punctures based on anatomical measurement and histopathology. *Lancet* I;230-233.
2. Jain, et al. 1999. Ultrasound study of heel to calcaneum depth in neonates. *Arch Dis Child Fetal Neonatal Ed.* May, 80(3):F243-5.
3. Reiner, et al. 1990. Optimal sites and depths for skin puncture of infants and children as assessed from anatomical measurements. *Clin Chem.* Mar, 36(3):547-9.
4. Data on file.

Great Blood Flow and Better Lab Samples

INSTRUCTIONS FOR USE



1. PULL RING PROTECTING INTERNAL STERILE BLADE – DO NOT TWIST. (NOTE BLADE PATH ►)
2. PLACE AGAINST BABY'S HEEL.
 - TEXTURED BODY ENSURES SECURE PLACEMENT ON BABY'S HEEL.
 - TAPERED EDGE AND ARROW ARE GUIDES FOR ACCURATE PLACEMENT.
3. CLICK.
 - SMOOTH FIRING – DOES NOT "JUMP."
 - BLADE RETRACTS AND LOCKS PERMANENTLY IN PLACE FOR SAFETY AFTER USE.

NeatNick™ – Less Painful; Fastest Heel Lancet

NeatNick's faster blade speed produces a virtually instantaneous incision meaning less pain for the baby. The high-precision surgical blade produces an accurate, clean-edged incision through the capillary bed, at a depth level comparable to other sweeping lancets. With NeatNick, you're certain of rapid, ample blood draws, without excessive, painful squeezing. You get better results in less time and with less pain. All at a remarkably sensible price.

In One Polybag! NeatNick with a TootSweet Twist-Tip™ Vial



Give comfort to your babies and convenience to your clinicians! Each perforated bag contains one vial of TootSweet and one NeatNick heel lancet.

NEATNICK & TOOTSWEET TOGETHER IN ONE POLYBAG: PREMIE SIZE NEATNICK WITH 1ML VIAL; FULL-TERM SIZE NEATNICK WITH 2ML VIAL.

PRODUCT SPECIFICATIONS:

Full-Term Size: Length 2.5mm-3.0mm; Depth 1.0mm-1.25mm
 Premie Size: Length 1.75mm-2.25mm; Depth .85mm-1.0mm
 NeatNick is a sterile, single-use disposable "sharp" used to puncture an infant's heel for collecting a blood sample. Latex-free. See instructions for use.
 For TootSweet product specifications, see the Product Sheet or visit our web site.

Ordering Information



For a product trial, questions or to contact your sales representative, please call us at 1-800-255-3901.

ITEM#	DESCRIPTION	QUANTITY
<i>NeatNick Sweeping Action Heel Lancet</i>		
Sterile, single-use disposable sharp. Latex-free.		
For Babies Weighing LESS THAN 1,800 - 2,000 Grams		
1030083	Premie Size Lime Green	100
For Babies Weighing MORE THAN 1,800 - 2,000 Grams		
1030085	Full-Term Size Mango Orange	100
<i>TootSweet 24% Sucrose Solution with NeatNick</i>		
Twist-Tip vial with heel lancet in polybag		
103008PT1-100	1ml vial with NeatNick Premie size	Box of 100
103008FT2-100	2ml vial with NeatNick Full-Term size	Box of 100



natus
pediatrics

Natus Medical Incorporated

1501 Industrial Road • San Carlos, CA 94070 USA | 1.800.303.0306 (US/CA) • Worldwide: 1.650.802.0400
 www.natus.com



SugarPlum™ Glucose Lancet

When You Only Need a Drop of Blood!

- Sterile
- Single Use
Needle Retracts
and Locks
After Use
- Two Controlled
Depths of
Penetration:
1.0mm – yellow
1.8mm – gray
- Latex-Free



YELLOW FOR MICROPREEMIES
TO FULL-TERM BABIES

GRAY FOR FULL-TERM
BABIES AND ADULTS

Introducing SugarPlum – A glucose lancet for babies!

Wish you could draw just a single drop of blood for glucose tests? Now you can – with the SugarPlum glucose lancet.

- The same lancet style used for adult glucose tests – but sized for babies.
- Two controlled depths – 1.0mm depth for micropreemies to full-term babies; 1.8mm depth for full-term babies and adults.
- Economical.

Hawaii Medical
SugarPlum™

Using SugarPlum™ is Safe and Simple!



1. Remove protective cap



2. Place the raised red platform end of lancet on the site



3. Gently press down to activate the lancet

SugarPlum And NeatNick™ – Perfect Companions For All Your Babies' Blood Draws!

Use SugarPlum for glucose tests that require just a drop of blood. Use our NeatNick sweeping blade lancet for PKU's, CBC's, and other tests. With NeatNick and SugarPlum you can choose the right lancet for all your babies' blood draws.

SugarPlum's patented design makes glucose draws quicker, easier and more comfortable for your babies. Press against the heel – SugarPlum automatically fires at the correct pressure. Before and after firing, the needle is safely concealed in the plastic body. 1.0mm depth for micropreemies to full-term babies (yellow); 1.8mm depth for full-term babies and adults (gray).

Ordering Information

ITEM #	DESCRIPTION	QUANTITY
<i>SugarPlum Glucose Lancet</i> Sterile, single-use disposable sharp. Latex-free.		
<i>For Micropreemies to Full-Term Babies</i>		
1040043	Un-bagged, 1.0mm depth (yellow)	100 per box
1040044	Individually Bagged, 1.0mm depth (yellow)	100 per box
<i>For Full-Term Babies and Adults</i>		
1040041	Un-bagged, 1.8mm depth (gray)	100 per box
1040042	Individually Bagged, 1.8mm depth (gray)	100 per box

PRODUCT SPECIFICATIONS:

1.0mm depth (g26) for Micropreemies to Full-Term Babies (yellow)
1.8mm depth (g23) for Full-Term Babies and Adults (gray)
SugarPlum is a sterile, single-use disposable "sharp" used to puncture an infant's heel for collecting a blood sample. Latex-free. See instructions for use.



natus
pediatrics



Natus Medical Incorporated

1501 Industrial Road • San Carlos, CA 94070 USA
1.800.255.3901 (US/CA) • Worldwide: 1.650.802.0400
www.natus.com