

# ALGO<sup>®</sup> 5

Newborn Hearing Screener

*The new, advanced ALGO<sup>®</sup> 5 Newborn Hearing Screener combines the trusted Natus AABR<sup>®</sup> algorithm with cutting edge technology to provide the ideal solution for your newborn hearing screening program.*

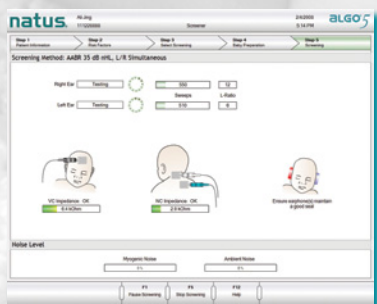
## THE NEXT-GENERATION ALGO 5 SYSTEM FEATURES:

**Natus AABR<sup>®</sup> technology** — the gold standard in newborn hearing screening, with clinically proven sensitivity & specificity

**Device-based Data Management**

- Statistical reports
- Pre-formatted letter templates
- Multi-patient management

**Easy-to-use graphical interface**



**Network compatible**

**Optional page printer**

**Panel PC**

**Label Printer**

**Page Printer (optional)**



# ALGO<sup>®</sup>5

Newborn Hearing Screener

**Weight** • 140 lbs (63.5 kg)

**Dimensions** • 61.5in H x 20in W x 19.5in D

**Sweep Rates** • 37 clicks/second (nominal) or 34 clicks/second (nominal) alternating

**Power Supply** • Power Rating 100-120 V~, or 200-240 V~100 VA, 50/60 Hz,  
1.3 Amps (as measured without optional Laser Printer)

**This system complies with the following safety and EMC standards:**

- UL60601-1;
- CSA-22.2 601-1;
- EN60601-1 and EN60601-1-2 Class I, Type BF Equipment.

## Classifications

- Class I equipment, BF type applied part
- Not suitable for use in the presence of flammable Anesthetic, Mixture with Air, Oxygen or Nitrous Oxide
- Continuous operation
- Operating Temperature: 10° - 40° C (50° - 104° F)
- Storage Temperature: -20° - 40° C (-4° - 104° F)
- Humidity Range: 10 - 90% non-condensing
- Operating Altitude: sea level - 6000 ft



**natus**  
pediatrics

Natus Medical Incorporated  
1501 Industrial Road • San Carlos, CA 94070  
Ph: (847) 949-5200 • Fax: (847) 949-8615

Global Sales & Support  
1-800-303-0306

[www.natus.com](http://www.natus.com)



P/N 004103C